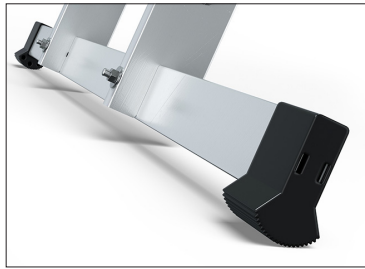


# LADDER ACCESSORIES

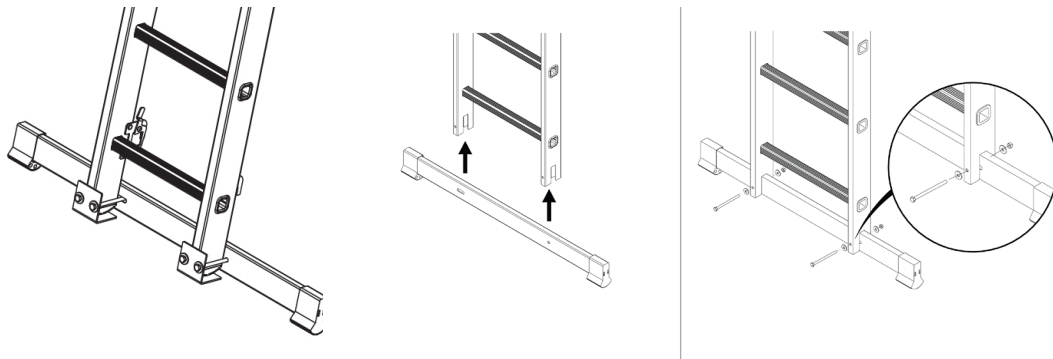


## ALUMINUM STABILIZER FOR MULTI-FUNCTIONAL LADDERS

- Strong aluminum profile
- Non-slip plastic feet
- Stabilizes the ladder

Stabilizer 900 [mm]

Stabilizer assembly instruction  
Stabilizer 980, 1100, 1200 [mm]

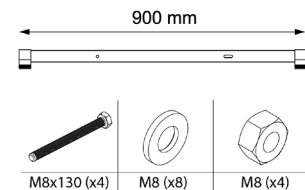
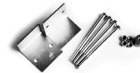


ASSEMBLY INSTRUCTIONS

60

### STABILIZER 900 [MM]

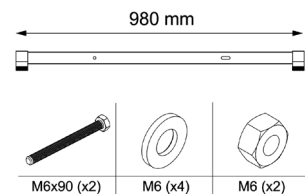
- Profile 60x20 [mm]
- For DW3 PRO\*: 3x12, 3x13, 3x14, 3x15, 3x16 \*In accordance to the EN 131 standard, a leaning ladder over 3m must have a stabilizer. Stabilizer 900mm is dedicated to the third segment of the ladder used separately as a leaning ladder (not included in set)



900 [mm]

### STABILIZER 980 [mm]

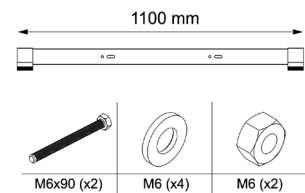
- Profile 40x20 [mm]
- For DW3 BASIC: 3x6, 3x7, 3x8, 3x9, 3x10, 3x11



980 [mm]

### STABILIZER 1100 [mm]

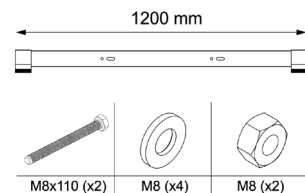
- Profile 60x20 [mm]
- For DP PRO: 1x12, 1x13, 1x14, 1x15, 1x16, 1x17, 1x18;  
DW2 PRO: 2x6, 2x7, 2x8, 2x9, 2x10, 2x11;  
DW3 PRO: 3x6, 3x7, 3x8, 3x9, 3x10, 3x11



1100 [mm]

### STABILIZER 1200 [mm]

- Profile 60x20 [mm]
- For DW2 PRO: 2x12, 2x13, 2x14  
DW3 PRO: 3x12, 3x13, 3x14, 3x15, 3x16



1200 [mm]