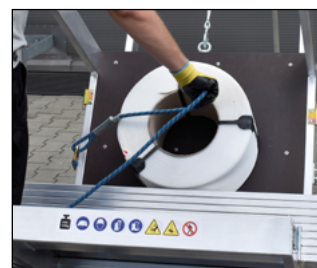


# LADDER HOIST



# LADDER HOIST



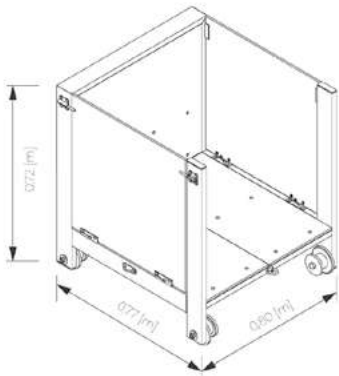
10

## LADDER HOIST

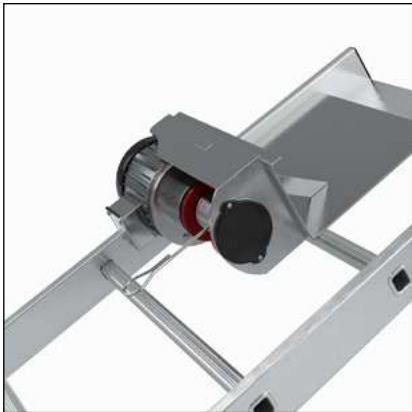
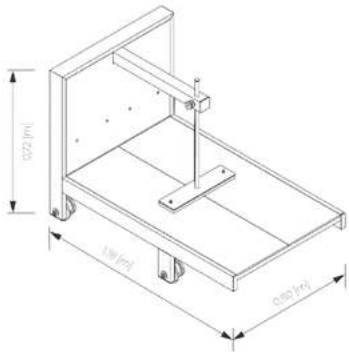
- Lightweight aluminum construction that will be perfect for daily support in construction and renovation work
- Easy to assemble and disassemble, and when folded, the compact form will allow for convenient transportation and storage
- All components have a total weight of 90 kg
- Lifting speed as high as 8 meters per minute
- Lifting capacity up to 125 kilograms
- Large transport STANDARD trolley or PV MODULES trolley, which are additionally covered with waterproof non-slip plywood
- Possibility of disassembling side covers in the standard trolley enables transportation of materials of various dimensions
- Drabest ladder hoist has CE declaration, all necessary approvals, and meets health and safety standards
- It will provide you and your employees with many years of safe and comfortable work

LADDER HOIST		
	A [m] HEIGHT TO THE ROOF	6,50
	B [m] LADDER LENGTH	12,5
	C [m] LADDER WIDTH	0,63
	E [m] STABILIZER LENGTH	1,12
	G [m] BRACKET LENGTH	1,90 ÷ 3,30
	WEIGHT [kg]	90
	PACKAGING DIMENSIONS [m]	2,00 x 0,80 x 1,50

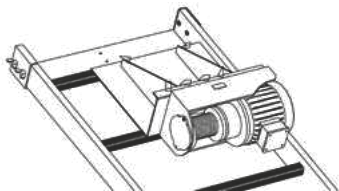
■ STANDARD trolley  
WT-AL-M-12



■ PV MODULES trolley  
WT-AL-M-12-BW



LADDER HOIST



MINIMUM ENGINE POWER	1050 W
SUPPLY VOLTAGE	230 V
MAX CAPACITY	125 [kg]
LINE LENGTH	12 [m]
LIFTING SPEED	8 [m/min.]
ELECTRIC MOTORINGRESS PROTECTION RATING	IP 54



