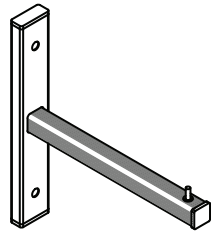
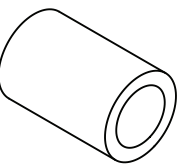
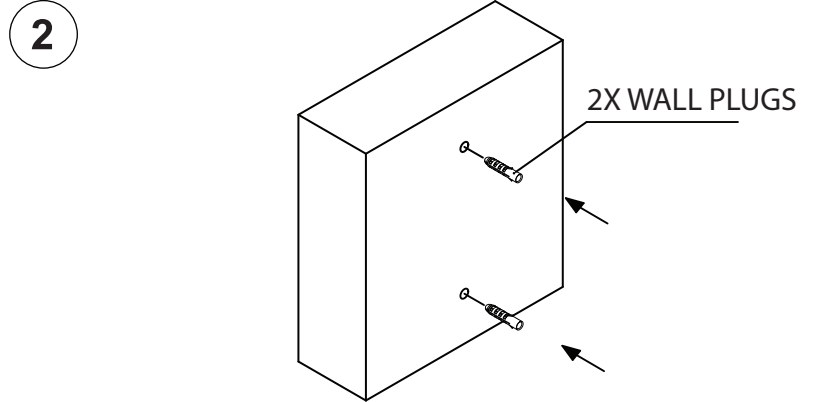
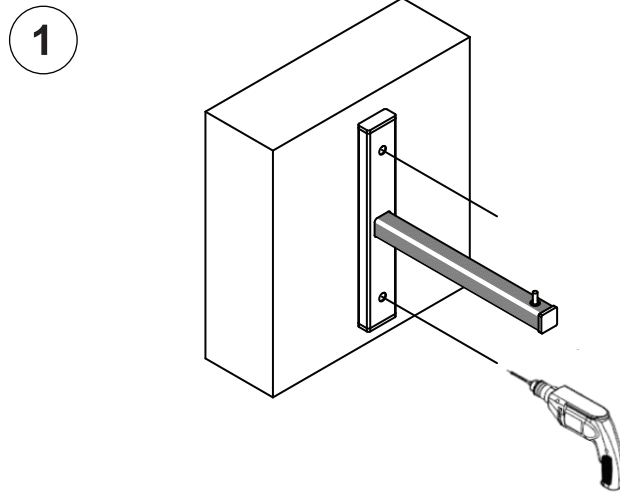


ASSEMBLY INSTRUCTIONS

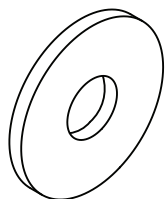
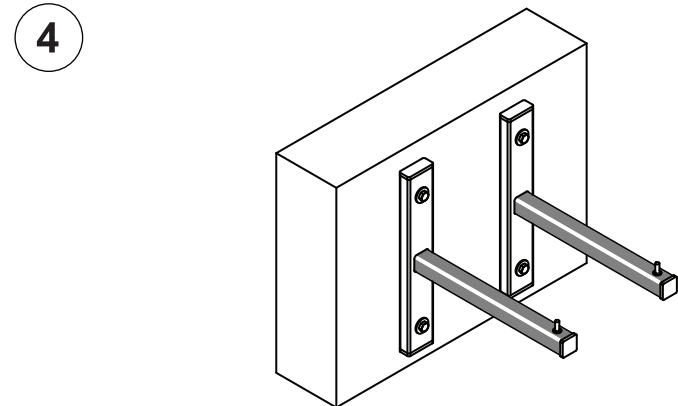
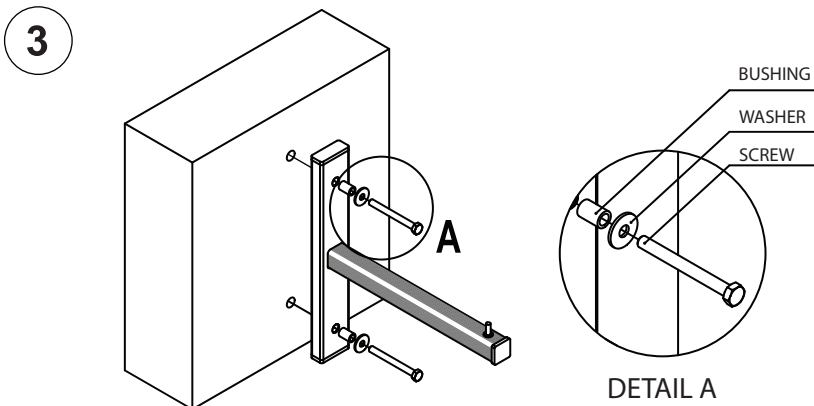
PARTS LIST



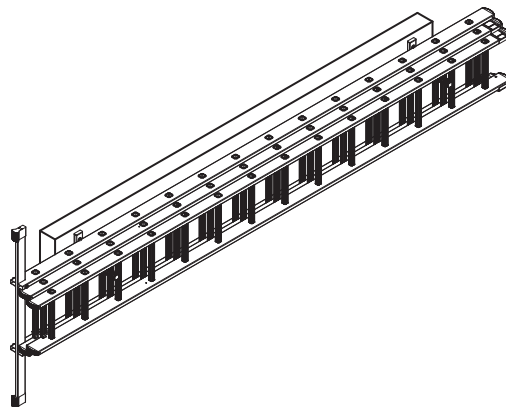
2X HOOKS



2X BUSHINGS



2X WASHERS



Aluminium Bracket for Ladder Storage

Assembly Instructions

Recommended mounting components:

- Mounting plug: plug Ø10x60 mm
- Hole diameter in wall for plug Ø10x60 mm: Ø10
- Minimum hole depth in wall for plug Ø10x60 mm: min. 70 mm
- Screw: hex head screw M8x80 mm

The manufacturer is not responsible for any damage caused by using different parts for mounting the bracket.

