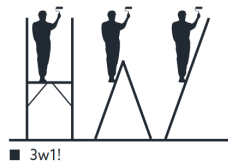
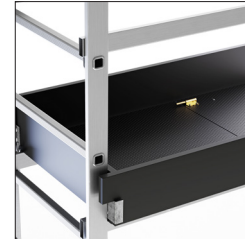


LADDERS FOR PROFESSIONALS



CERTIFICATE
EN 1004
PROFESSIONAL USE



■ INCLUDED

42

HECTOR

PROFESSIONAL ALUMINUM SCAFFOLDING

- HECTOR aluminum ladder scaffolding is a multi-purpose mobile structure for the construction industry
- Wide working platform 1,34 x 0,60 [m]
- 28x28 [mm] grooved rungs pressed to the profile
- Wall mounting kit included!
- Side protection panels included
- Special joints facilitate the assembly of the structure
- Stabilizer with a dimension 1,30 [m] is movable so you can position the scaffolding at any distance from the wall
- 3in1: scaffolding, leaning ladder, free-standing ladder!
- Load capacity max. 200 kg
- Quality EN 1004

HECTOR		HECTOR	
<p>MEASUREMENTS & WEIGHTS MAY VARY +/-5%</p>	A1 [m] WORKING HEIGHT	4,73	
	B1 [m] LADDER LENGTH	3,91	
	C [m] LADDER WIDTH	0,57	
	E [m] WIDTH	1,51	
	S [m] STABILIZER	1,31	
	WEIGHT [KG]	43,6	
	PACKAGE [m]	0,56x0,325x2,00	