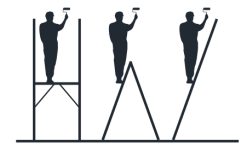
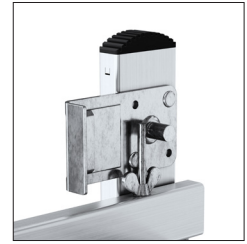


## LADDERS FOR HOME USE

28



■ ARD 2x8 HOME 125 KG



■ 3in1!

CERTIFICATE  
**EN 131**  
NON PROFESSIONAL USE

## ARD HOME

### ALUMINUM SCAFFOLDING

- Dedicated for work in households
- Solid scaffolding structure made of aluminum
- Wide working platform 1,14 x 0,34 [m], a special surface of the platform ensures stability and safety during work
- 25x25 [mm] grooved rungs pressed to the profile
- Stabilizer with a length 0,90 [m]
- Special non-slip feet ensure the highest safety standard
- 3in1: scaffolding, leaning ladder, free-standing ladder!
- Load capacity max. 150 kg
- Quality EN 131

ARD HOME	NUMBER OF STEPS	ARD HOME 2x6	ARD HOME 2x7	ARD HOME 2x8
	A1/A2/A3 [m] WORKING HEIGHT	2,97/2,89/3,68	2,97/3,14/4,18	2,97/3,40/4,70
	B1 [m] LADDER LENGTH	1,61	1,87	2,14
	B2 [m] LADDER LENGTH	2,67	3,20	3,73
	C [m] LADDER WIDTH	0,46	0,46	0,46
	E [m] WIDTH	1,14	1,14	1,14
	S [m] STABILIZER	0,90	0,90	0,90
	WEIGHT [kg]	11,0	12,0	13,0